

**ITEM 34. PARKING – LOADING ZONE AND DISABILITY PARKING ONLY –  
HICKSON ROAD THE ROCKS**

**TRIM RECORD NO: 2017/540042**

**RECOMMENDATION**

It is recommended that the Committee endorse the following reallocation of parking on the western side of Hickson Road, The Rocks, north of George Street:

- (A) Between points 149.9 metres and 157.7 metres (two car spaces) as “Loading Zone 6am-9.30am” and “Disability Parking Only At Other Times”; and
- (B) Between points 162.8 metres and 170.6 metres (two car spaces), north of George Street as “No Parking Authorised Car Share Vehicles Excepted Zone GG”.

**VOTING MEMBERS FOR THIS ITEM**

<b><i>Voting Members</i></b>	<b><i>Support</i></b>	<b><i>Object</i></b>
City of Sydney		
Roads and Maritime Services		
NSW Police – Sydney City LAC		
Representative for the Member for Sydney		

**DECISION**

**BACKGROUND**

The Arts Exchange has requested for a “Disability Parking Only” space outside the entrance of their building at 10 Hickson Road, The Rocks.

**COMMENTS**

Hickson Road, The Rocks, is designated for two-way traffic flow with an approximate width of 12.4 metres. The road and footpath grades are relatively flat adjacent to this proposed space.

The kerb space at the proposed space is currently signposted as “No Parking Authorised Car Share Vehicles Excepted Zone GG” and the footpath is approximately 3.3 metres wide.

Under existing conditions, vehicles park on both sides of the street which reduces the trafficable lane for two-way traffic flow to an approximate width of seven metres. The remaining width is allocated for on-street parking.

The Australian Standard for on-street disability parking (AS 2890.6 – 2009) requires the provision of a 3.2 metre wide by 7.8 metre long bay.

A 7.8 metre long bay is proposed and with consideration for the width of existing parking lane in Hickson Road, a 3.2 metre wide bay can be accommodated within the carriageway

An existing driveway immediately south of the proposed space will facilitate wheelchair access between the space and the footpath.

The existing car share space will be reallocated to the parking spaces north of this space.

### **CONSULTATION**

The City consulted local residents and businesses in the area. There were 119 letters sent out with no responses supporting or opposing the proposal.

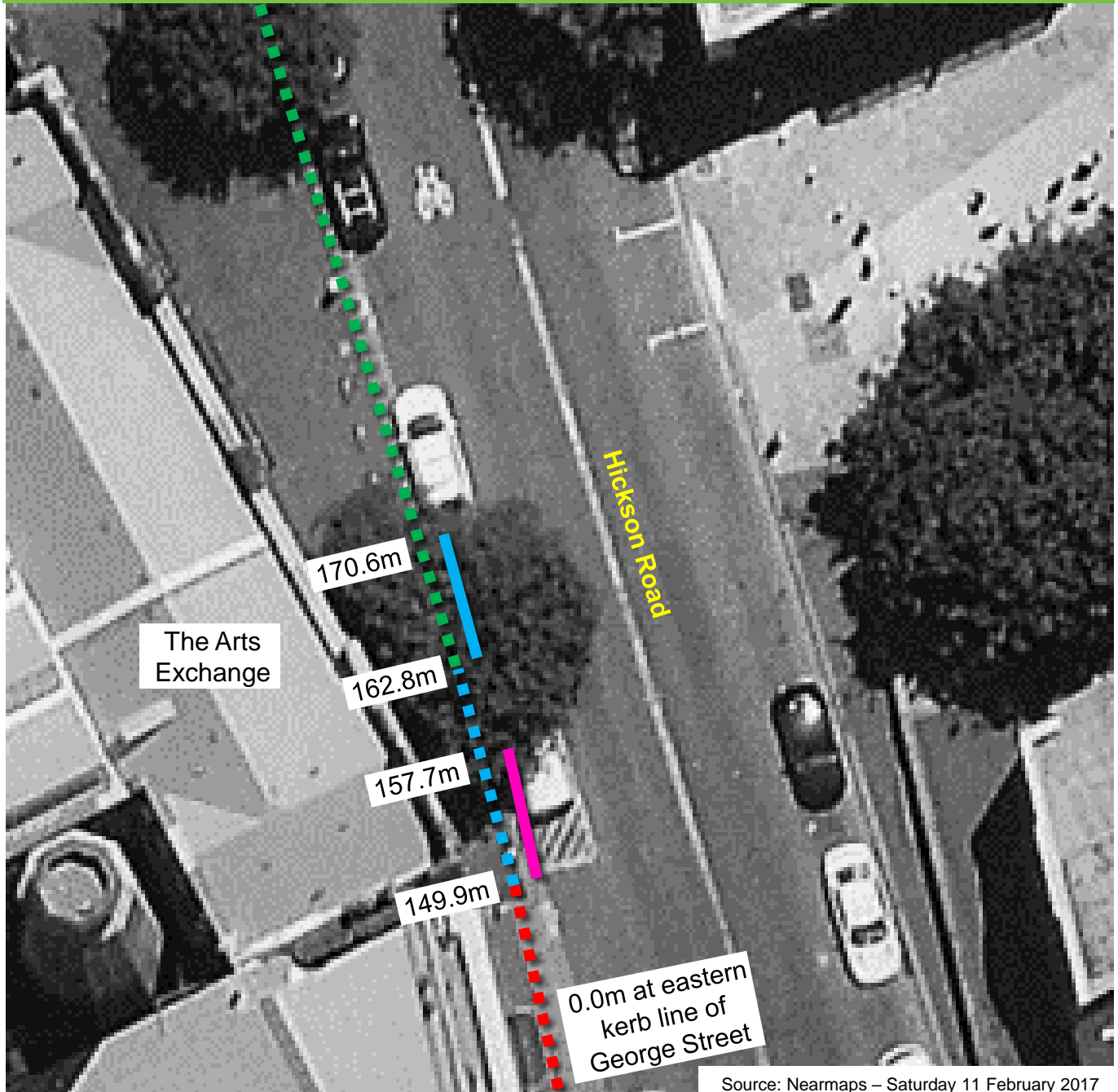
### **FINANCIAL**

Funds are available in the current budget.

Parking – Loading Zone and Disability Parking Only – Hickson Road The Rocks

Tony Ly, Engineering Traffic Officer

## Hickson Road, The Rocks Parking Changes



### Existing

- ■ ■ "No Parking"
- ■ ■ "No Parking Authorised Car Share Vehicles Excepted Zone GG"
- ■ ■ "2P Ticket 8am-6pm" and "4P Ticket 6pm-10pm"

### Proposed

- ■ ■ "Loading Zone 6am-9.30am" and "Disability Parking Only At Other Times"
- ■ ■ "No Parking Authorised Car Share Vehicles Excepted Zone GG"

